

LD230

Customer Display

Clear, Easy-to-read Vacuum Fluorescent Display



Stand-alone model
with 2 poles.

- Supports 11 command modes included EPSON and Logic Control command.
- Power supply from 5V to 12V to prevent any mindless use of improper power input.
- 20-column x 2-line dot matrix in a wide viewing angle.
- Easy connectivity to a wide range of POS products.
- OPOS/JPOS driver is standard.



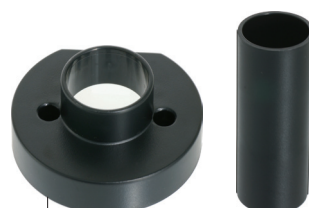
Attached to base
without poles.



Cool White Available.



Stand-alone model with
Stretching Pole.



Round Base and Pole Adapter
are for optional.



Stand-alone model with
Round Base.



LD230 Customer Display

Specification

General	Display Method	Vacuum Fluorescent Display (Blue-green)
	Number of characters	40 (20 columns x 2 lines)
	Brightness	500~1000 cd/m2
	Character font	5 x 7 dot matrix, cursor
	Character type	95 Alphanumeric, 32 International Characters
	Character size	5.5 (H) x 9.2 (W) mm
	Dot Size (X x Y)	0.86 x 1.2 mm
	Download characters	9 characters
	Panel Dimension	220 (W) x 50 (D) x 87 (H) mm
	Pole Dimension	Per support: 130 (L) x 34.5 (Dia) mm
	Base Dimension	217 (W) x 106 (D) x 33 (H) mm
	Viewing Angle	Max. 90°
	Horizontal Rotation	Max. 355°
	Weight	Approx. 980 grams
Commands Mode		UITIMATE, LD220, EPSON POS D101, AEDEX, UTC/S, UTC/P, ADM788, DSP800, CD5220, EMAX, LOGIC CONTROL
Language Support		US English, Int'l English, Bosnia, Croatian, Czech, Danish, Dutch, Estonian, Faroese, Finnish, Flemish, French, Fr Canadian, German, Greek, Hebrew, Hungarian, Icelandic, Indonesian, Irish, Italian, Katakana, Latvian, Lithuanian, Norwegian, Polish, Portuguese, Romanian, Russian, Slovene, Slovak, Spanish, Swedish...
Interface		RS-232 (serial) / USB
Connection	Baud rate	Direct connection 9600 or 19,200 bps
Reliability	MTBF	30,000 hours
Power	Consumption	5~12 VDC
Safety	EMC standards	FCC, CE
	Safety standards	

